

[Special Series]

Haas TL Series



The Toolroom Lathes



CE-compliant chip and coolant enclosure available

1800-rpm Vector Drive Spindle

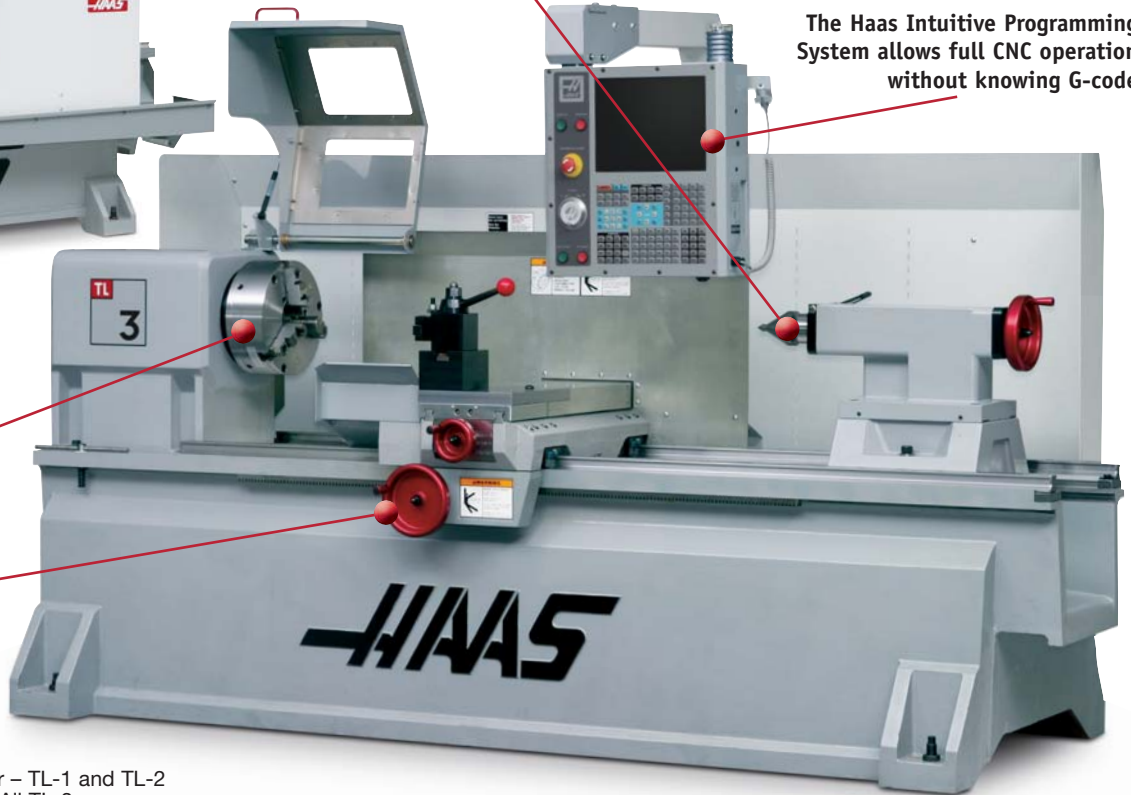
Handwheels and precise DRO make manual operation simple, and the heavy-duty cross-slide accepts a variety of tool post options

Base Models Start at

TL-1	TL-2
\$22,995*	\$26,995*
TL-3	TL-3W
\$39,995*	\$53,995*

The optional tailstock, with a manually adjustable quill, provides additional support for long workpieces

The Haas Intuitive Programming System allows full CNC operation without knowing G-code



Warranty: 6 Months Parts and Labor – TL-1 and TL-2
1 Year Parts and Labor – All TL-3

[Standard Features]

- Vector Drive Spindle
- Haas Intuitive Programming System
- 15" Color LCD Monitor w/USB Port
- Integral Chip-Flow Channel
- 1 MB Program Memory
- Manual Handwheels
- Cross Slide, Tool-Post Ready
- Single- or Three-Phase Power¹

[Options] partial list

- 4-Station Automatic Tool Turret¹
- 3500-rpm Spindle (requires enclosure)¹
- Full Chip and Coolant Enclosure²
- 8-Station Bolt-On Style Tool Turret³
- 30 hp High-Torque Spindle⁴
- Manual Tailstock w/Adj. Quill
- Manual Three-Jaw Chuck
- Manual Steady Rest
- Tool Post/Toolholders
- Spindle Orientation
- Coolant Pump Kit
- Rigid Tapping
- Work Light
- User-Definable Macros

¹ TL-1 and TL-2 only. ² Except TL-3W.

³ TL-3 only; requires enclosure. ⁴ TL-3 only.



Haas Automation, Inc. | www.HaasCNC.com | 800-331-6746 | Made in U.S.A.

Prices and specifications subject to change without notice. Not responsible for typographical errors. Machines shown with optional equipment. *Base price in US dollars.

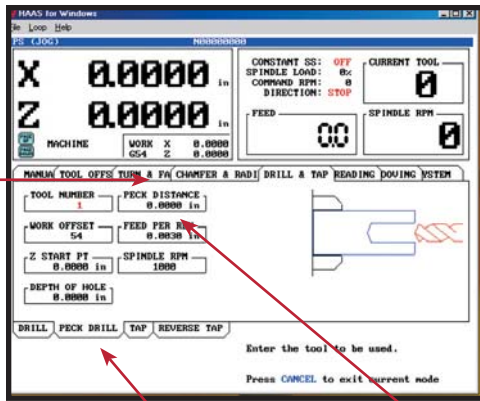


Haas TL Series

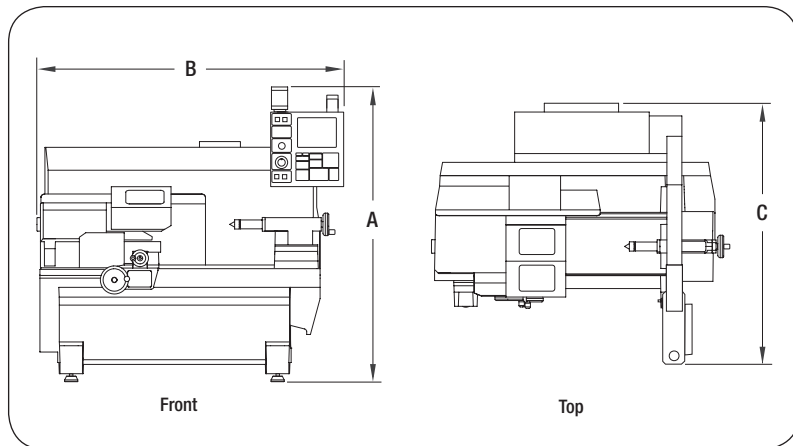
The Toolroom Lathes

The Haas Toolroom Lathes combine the functionality and simplicity of a manual lathe with the power and flexibility of the easy-to-use Haas CNC system. With standard handwheels and high-accuracy DRO, manual machinists will be cutting parts in minutes. And with the Haas Intuitive Programming System, they'll transition quickly and easily into automatic modes and full CNC.

Intuitive Programming System



- 1 Use the top tab menu to select the type of operation to perform.
- 2 Choose from the lower tabs to define the specific cutting operation.
- 3 Fill in the requested information and press Cycle Start.



Operating Dimensions	TL-1	TL-2	TL-3	TL-3W
A. Max Operating Height	78" 1 981 mm	78" 1 981 mm	82" 2 083 mm	82" 2 083 mm
B. Max Operating Width	87" 2 210 mm	101" 2 565 mm	122" 3 099 mm	123" 3 124 mm
C. Max Operating Depth†	72" 1 829 mm	72" 1 829 mm	87" 2 210 mm	87" 2 210 mm

† With control swung forward. Additional 36" (914 mm) required to open rear service panel.

[Specifications]

Capacities	TL-1	TL-2	TL-3 ¹	TL-3W
Workholding (opt.)	8"	10"	12"	12"
Chuck	203 mm	254 mm	305 mm	305 mm
Between Centers	30"	48"	60"	60"
	762 mm	1219 mm	1524 mm	1524 mm
Max Cutting Dia.	16"	16"	20"	30"
	406 mm	406 mm	508 mm	762 mm
Max Cutting Length	30"	48"	60"	60"
	762 mm	1 219 mm	1 524 mm	1 524 mm

Spindle

Max Speed	2000 rpm ²	2000 rpm ²	1800 rpm	1800 rpm
Max Motor Rating	7.5 hp 5.6 kW	12 hp 8.9 kW	18 hp ³ 13.4 kW	30 hp 22.4 kW
Max Torque	100 ft-lb @ 375 rpm 136 Nm @ 375 rpm	150 ft-lb @ 150 rpm 203 Nm @ 150 rpm	204 ft-lb @ 417 rpm 277 Nm @ 417 rpm	1600 ft-lb @ 60 rpm 2 169 Nm @ 60 rpm
Spindle Nose	A2-5	A2-6	A2-6	A2-6
Spindle Bore	Ø2.31" 58.7 mm	Ø3.00" 76.2 mm	Ø3.50" 88.9 mm	Ø3.50" 88.9 mm

Swing Diameter

Over Front Apron	16.0" 406 mm	16.0" 406 mm	20.0" 508 mm	30.0" 762 mm
Over Cross Slide	9.5" 241 mm	11.1" 282 mm	13.0" 330 mm	18.0" 457 mm

Travels & Feedrates

X Axis	8" 203 mm	8" 203 mm	12" 305 mm	16" 406 mm
Z Axis	30" 762 mm	48" 1 219 mm	60" 1 524 mm	60" 1 524 mm
X-Axis Max Thrust	3096 lb 13 772 N	3096 lb 13 772 N	3096 lb 13 772 N	3096 lb 13 772 N
Z-Axis Max Thrust	1548 lb 6 886 N	2340 lb 10 409 N	3086 lb 13 727 N	4236 lb 18 843 N
X-Axis Rapids	75 ipm 1.9 m/min	75 ipm 1.9 m/min	75 ipm 1.9 m/min	75 ipm 1.9 m/min
Z-Axis Rapids	150 ipm 3.8 m/min	150 ipm 3.8 m/min	150 ipm 3.8 m/min	150 ipm 3.8 m/min

General

Power	1-Phase - 240V @ 40A 3-Phase - 195-260 V @ 25A	195-260 VAC 3-Phase @ 40A	195-260 VAC 3-Phase @ 80A
Machine Weight	4100 lb 1 860 kg	4600 lb 2 087 kg	6500 lb 2 948 kg
		6750 lb 3 062 kg	

¹ Big-Bore version available. ² 3500-rpm available; requires enclosure. ³ 30 hp (22.4 kW) high-torque available; 650 ft-lb (881 Nm) @ 150 rpm.



Prices and specifications subject to change without notice. Not responsible for typographical errors. Machines shown with optional equipment. *Base price in US dollars.